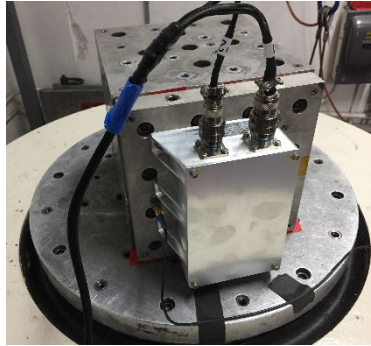


Lithium Primary Battery 39481



Features

- Compact and Lightweight
- High Energy Density
- Large Operating Temperature Range
- Cell Protection Diodes
- D38999 Connectors
- Rugged Aluminum Housing

Applications

- Space Flight (Manned)
- Military
- Commercial

Package Size

5.46" X 7.00" X 2.60"

Weight

3.0 lbs

Specifications	
Capacity	3.5 Ah
Energy	94.5 Wh
Voltage	27 VDC (Nominal)
Voltage Range	25.2 – 32.5 VDC
Charge Current	Non-rechargeable
Discharge Current	2.5 Amps continuous (4.0 Amps pulse)
Discharge Temperature	-40°C to +60°C
Mounting	See image below
Heater	Optional for extreme cold operation

